

# Ranching on the Northern Plains

## Always a Test

Every aspect of the GDAR operation is geared towards identifying and developing superior genetics. GDAR cattle are almost always on test, always being treated equally, and always being evaluated. The program is designed to find out who brings everything together in the most optimal package, who is the most efficient and profitable, and who should be chosen to continue the GDAR legacy. The operation is very fortunate in it's location and environment, which provide some great tools to achieve it's goals.



## Rolling Hills & Open Prairie

GDAR has two locations in Eastern Montana. The home place is just north of Sidney, MT. The Blue Mountain ranch is between Sidney and Wibaux, about 30 miles south of Sidney. Most of the operation is grazing land, but there is some farmland on which feed is raised. The grazing land is mostly native short grass prairie with pastures ranging from 300 to 1300 acres.

## Seasons on the Northern Plains

Montana weather can vary greatly. It will go from weeks of below zero temperatures in the winter to 100 plus degree days in the summer. Some years there is moisture, and some there isn't. But whatever the conditions GDAR cows are expected to endure and thrive.

## GDAR Mother Cows

*Always on test, always being treated equally, always being evaluated...*

*...who brings everything together in the most optimal package.*



## Efficient Cows

GDAR calves around 700 cows and heifers each year. The cows are expected to run under the same conditions that the local commercial man endures. This means they graze out as long as possible in the fall, usually until late December, before they ever see any feed. They are then fed a low cost diet until they are turned out on grass in May.

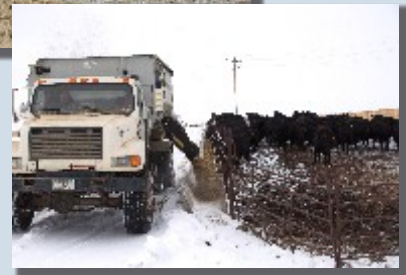
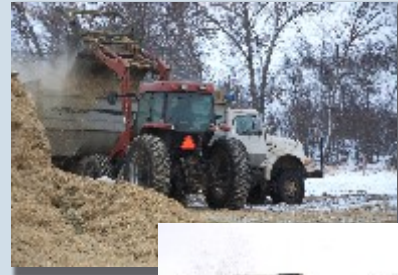
The GDAR program utilizes fall grazing and low cost, low energy feed rations to weed out any inefficient cows. Cows that can't function on a low input system in this environment are culled from the herd. The majority of the bulls go to commercial operations in a similar environment, and those bulls should surpass their expectations.

## Which Calves Make the Grade

The calves are weaned around the end of September and put on a high roughage ration at the home place. At this time about 1/3 of the bull calves are banded, and the bottom end of the heifer calves are culled off. Neither the bulls nor the heifers are pushed for high gains on feed, instead being fed a diet to ensure longevity.

### GDAR Yearling Bull Test

- 1/3 Cut at Weaning
- High Roughage Diet for Longevity
- Performance Tested
- Carcass Ultrasound Scanned
- Fertility Tested
- Top Cut Makes the Bull Sale



## Analyzing all that Data

Data collection and evaluation is central to the GDAR operation. Pride is taken in having solid, reliable numbers. The more accurate and dependable the data provided, the more accurate and dependable the EPDs and ratios will be. Larger contemporary and sire groups will give more accurate results. That is why this system treats all the cattle the same all year round, to have the most accurate and dependable data that can be provided.



While our environment and location can be trying at times and can create a lot of extra work, we still feel very lucky to be able to test our genetics in such a harsh and varying location. It can only make GDAR genetics more functional, more efficient, and more profitable.