

Foundation Cow Herd

GDAR Females

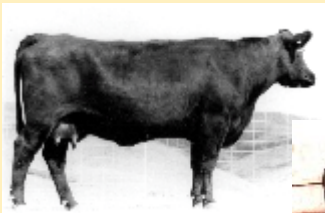
The success of the GDAR program can be attributed to the foundation cowherd that has been developed over the years. GDAR females have become renowned and sought after for their quality, consistency, and proven pedigrees. Over the past 50 years, the GDAR prefix has become the standard for maternal excellence.

The GDAR Functional Female

- Raises a calf every year
- Breeds back on time
- Weans a heavy calf
- Doesn't break down
- Has good udder structure
- Is easy fleshing
- Doesn't require extra inputs
- Doesn't need pampering

The Focus of the Program

From day one GDAR has selected for females with lots of femininity, adequate milk, eye appeal, and reproductive performance. They never wavered in their selection criteria, always steering clear of fads, and selecting females that fit the program. This has produced a low input cow herd with consistency, proven pedigrees, and generations of bred in maternal traits.



Rachel Rito 813 GDAR
Calved: 1978



GDAR Miss Blackbird 510
Calved: 1985



Lady Forever 1100 GDAR
Calved: 1981



LT Forever Lady 395 GDAR
Calved: 1983



GDAR Forever Lady 718
Calved: 1987



GDAR Forever Lady 719
Calved: 1987



GDAR Forever Lady 9300
Calved: 1989



GDAR Forever Lady 98
Calved: 1989



GDAR SVF Forever Lady 226D
Calved: 1994



GDAR SVF Forever Lady 64F
Calved: 1996

Functional and Efficient

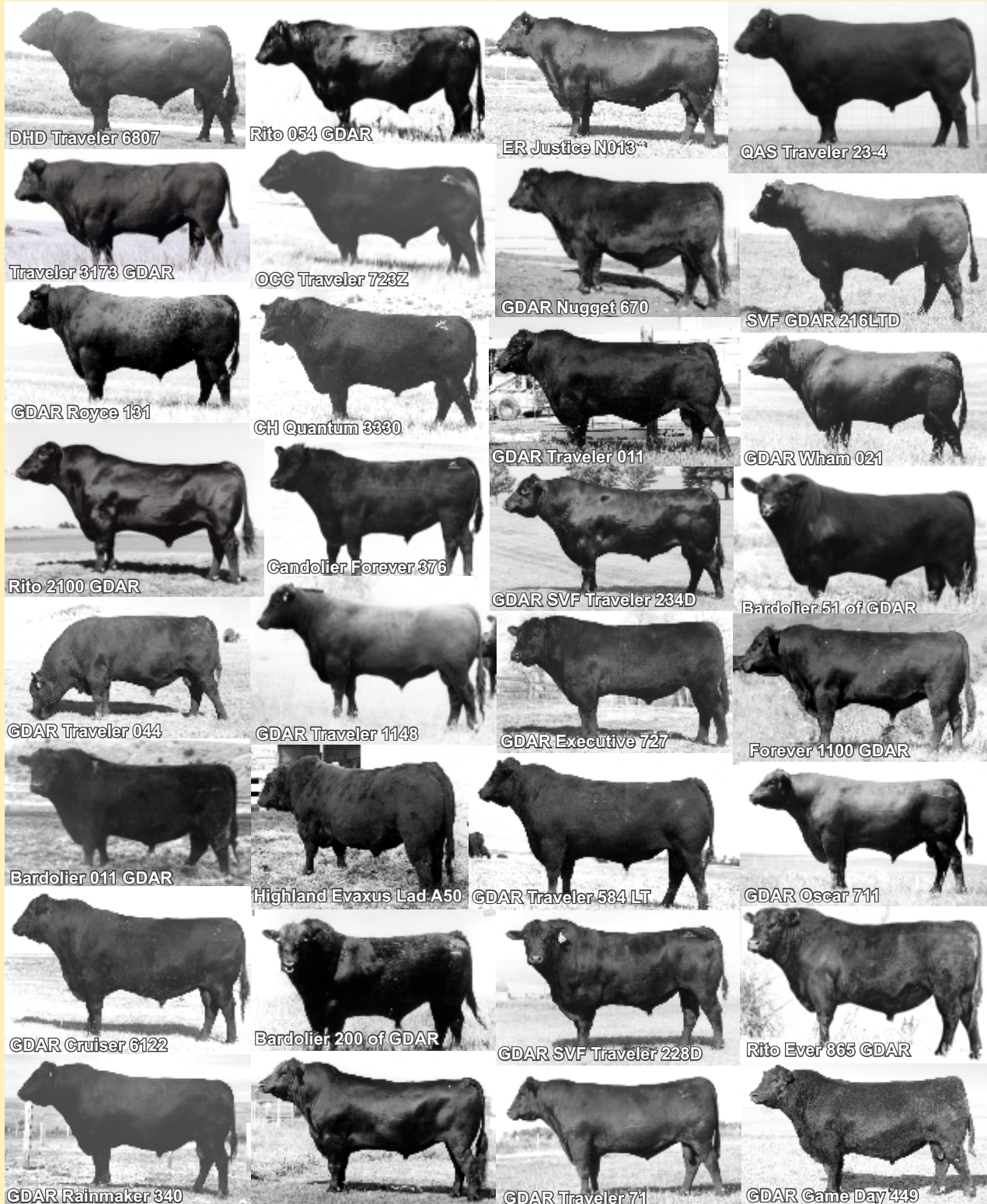
The GDAR female is first and foremost functional and efficient. The whole GDAR program is designed around the idea that a functional and efficient cow herd produces profits in the commercial sector.

A GDAR functional female is moderate, feminine, structurally correct, and is able to travel and forage in rough terrain without breaking down. She breeds up every year and weans a big calf. She has a good udder and is easy fleshing. Most importantly she doesn't require extra inputs, and doesn't need to be pampered.

The GDAR program naturally selects for efficiency because of its strict culling practices, and its low input system. The program is designed to achieve more while doing and spending less.

GDAR Foundation Herd Sires

GDAR herd sires are a testament to the GDAR program of balanced trait selection for economically important traits to raise efficient and functional cattle that will make the commercial cattleman a profit.



GDAR Foundation

GDAR Foundation